

# MPUMALANGA PROVINCE

SOCIO-ECONOMIC DEVELOPMENT



**exxaro**

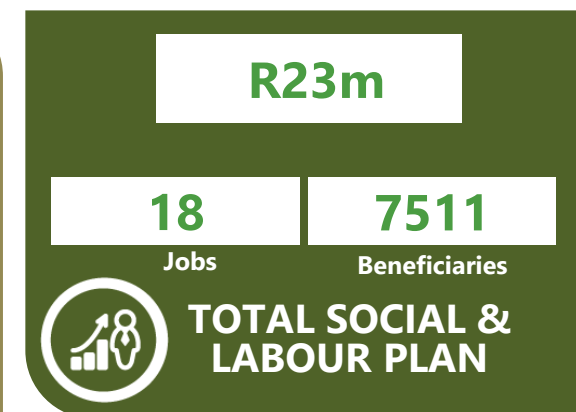
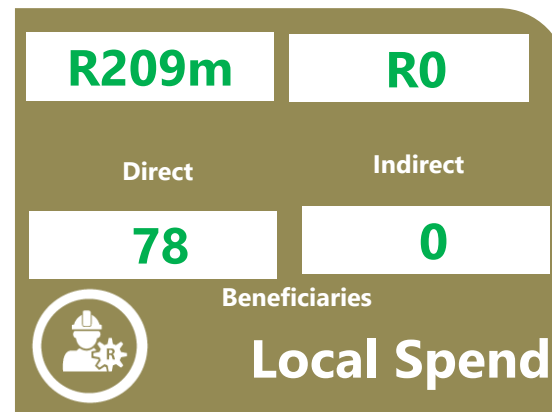
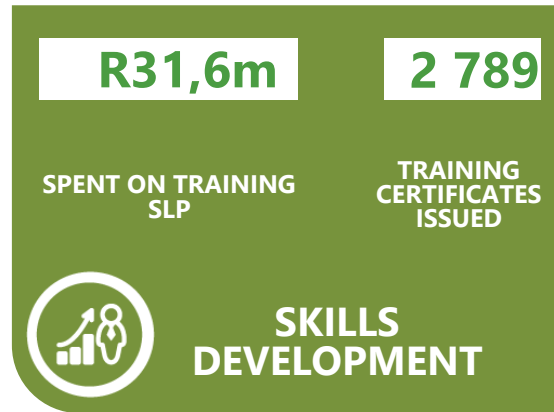
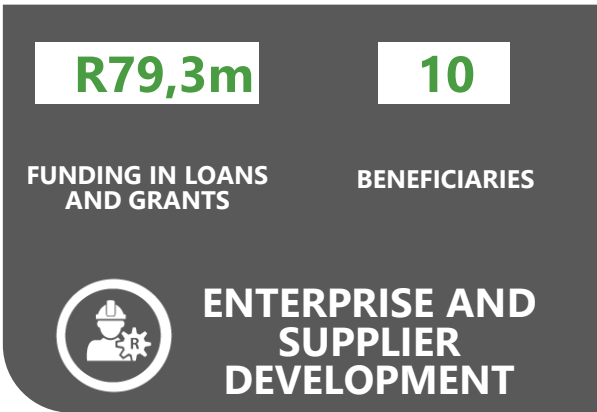
POWERING POSSIBILITY

# SOCIAL IMPACT

exxaro

POWERING POSSIBILITY

# LEEUPPAN SOCIAL IMPACT : 2015 – 2021



**ENTERPRISE AND SUPPLIER DEVELOPMENT**

Financial support provision to Exxaro suppliers and businesses outside the mining value chain (focus on agriculture)

**SKILLS DEVELOPMENT**

The BU achieved all its skills development commitments in its 2015-2020 SLP

**LOCAL SPEND**

Spend, by major **contractors & Exxaro** directly, on the procurement of the materials, goods, services or labour from Black Owned suppliers local to the **MLM** area.

**SOCIAL AND LABOUR PLANS**

Our core focus areas are infrastructure development, education and skills development, agriculture, enterprise and supplier development as well as sports arts and culture.

**173 JOBS**  
RETAINED **302**  
**NEW JOBS**  
CREATED

TOTAL SOCIAL INVESTMENT FROM 2015 TO DATE  
**R342.9 million**  
TOTAL NUMBER OF Beneficiaries = **10388 JOBS= 320**

**10388**  
BENEFICIARIES





**Thank you**

**exxaro**

POWERING POSSIBILITY